



### The **SYMBIOTE** Expectations/Warranty/Instructions Sheet

Thank you for your support and for being a part of our vision to **galvanize protectors to create self-determined individuals that construct safeguards against tyranny**. By supporting Arkayne you are essentially signing your Declaration of Independence. We love freedom just as much as you do, and we will do everything we can to help equip you with the mindset and tools you need to protect it.

The Symbiote bridge was born out of a need in this industry, a need that's long overdue a solution. We designed the Symbiote to meet or exceed the highest of expectations with ease of use and ability. Our goal was to mount any two night vision and/or thermal devices to a helmet to make owning the darkness affordable and not only possible, but seamless.

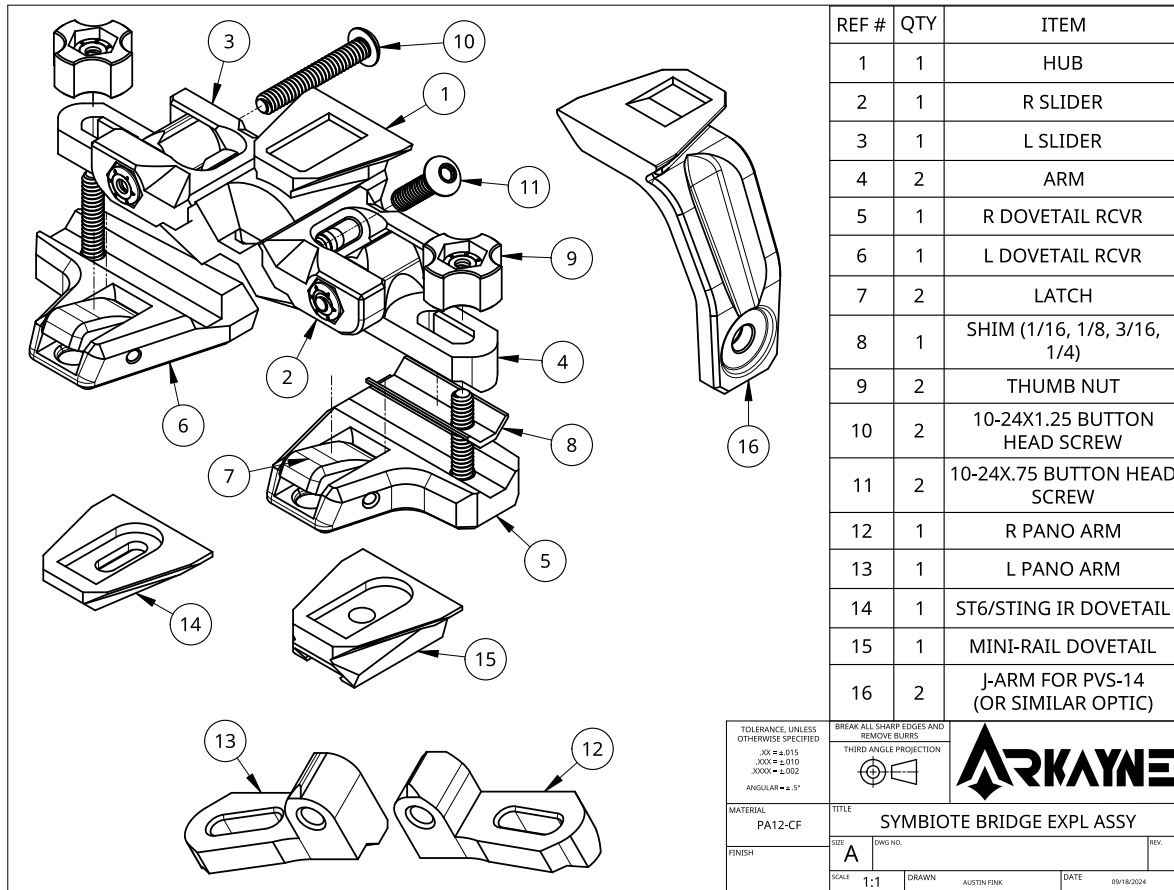
We can say with confidence the Symbiote is the most adjustable bridge in existence today. It fixes any alignment issue we have ever experienced in our time building dual band systems for freedom fighters and hunters across this great nation. The Symbiote was designed to have independent forward and rearward adjustment of each unit **individually**. It also features independent height adjustment to successfully align two units that land at two different heights vertically. To polish it off this bridge has full IPD (Inter Pupillary Distance) adjustment (what we call eyeball spacing). All end user's eyes are spaced slightly differently and the Symbiote is designed to accommodate this while keeping rectangular displays level.

We very intentionally engineered our adapters' dovetail interfaces. This means the Symbiote adaptors can be fastened to virtually ANY bridge on the market (with dove tail receivers) that you or your buddies may already have. Swapping units with our adaptors fastened to them will be seamless across multiple other bridges in the industry!

If you have a unit that we do not currently support with our current adaptor set, please feel free let us know by emailing [cs@arkayne.com](mailto:cs@arkayne.com). Our aim for excellence and unlocking the ability to mount any optic goes as far as your desire to mount it.

**Limited Lifetime Warranty:** When you buy the Symbiote you've bought our commitment to service you as the end user for the lifetime of your bridge. What this means is if there is ever any issue with the functional aspect of the product, we will happily send all replacement parts necessary to service the Symbiote and get it back up to 100% functionality. While most companies will burden you with complex warranty terms and conditions, we keep ours simple. If you EVER experience a catastrophic failure of your Symbiote bridge for any reason whatsoever, we will replace your bridge free of charge. The only requirement we have is that you send us photos as well as describe how it failed for our own internal information. Whether you are driving your side by side, operating in austere environments, or hunting predators in the darkness, know that we have you covered. Limited to one complete replacement over the lifetime of the bridge with the proof of total loss due to damage. This warranty only covers the bridge itself and the adaptors accompanying it. In no case will Arkayne

cover the loss or damage of a unit attached to the bridge. ALWAYS BE CERTAIN YOUR UNITS ARE INDEPENDENTLY TIED DOWN TO YOUR HELMET. ARKAYNE IS NOT RESPONSIBLE FOR DAMAGED UNITS FOR ANY REASON DURING USE. UTILIZE A PROPER LANYARD SYSTEM ATTACHED DIRECTLY TO YOUR NIGHT VISION AND/OR THERMAL UNITS. THIS IS YOUR RESPONSIBILTiy TO ENSURE PROTECTION OF YOUR DEVICES.



## SYMBIOTE Adjustment Instructions

To adjust Interpupillary Distance (IPD) loosen thumb nuts (9) and slide dovetail receiver (5,6) accordingly on the arm (4).

To adjust independent eye relief, loosen screw (11) using 1/8" hex key and slide each optic forwards or backwards until both ocular lenses are aligned. Be sure to line up the OCULAR lenses and NOT the objective lenses.

For coarse eye relief adjustment, the hex screw (11) can be relocated to one of 3 threaded inserts in the hub (1).

To install the pano arms (12,13), remove thumb nuts (9), dovetail receiver (5,6), and both screws (10) with 1/8" allen key. Ensure pano arms (12,13) are in their proper left and right positions with slots

angling back towards the end user before reinstalling dovetail receivers (5,6). Pano configuration adds 10 degrees FOV (field of view) per side for 20-degree total addition in FOV.



PHOTO 1



PHOTO 2



PHOTO 3

*Note: The photos above showcase the non-panoramic and panoramic arms installed. Photo 1 (left) shows a top view of the bridge with the non-panoramic arms installed. This is the factory configuration. Bottom view in photo 1 shows the bridge with the panoramic arms installed. Photo 2 (center) shows the bottom side comparing the non-panoramic to the panoramic arms. Photo 3 (Right) shows the center hub with screws (10) removed. Note the orientation of the panoramic arms. To install, slide arms into hub aligning the hole for screw (10). Slide screw through all holes. DO NOT LOSE THE LOCK NUT INSTALLED INTO THE SLIDER. Gently tighten screw into locking nut, and **torque to no more than 5in/lbs**. DO NOT OVERTIGHTEN. Reinstall dovetail receivers (left and right) and thumb nuts. Hand tighten snug, but DO NOT EXCEED 5 in/lbs.*

Included J-Arms can be installed for use with night vision devices such as the PVS-14's or Jerry 14's or RNV-14's or any similar device.



BOTTOM OF DOVETAIL

The dovetail adapter for mini-rails (15, Shown to the sides) can be used to install thermal or night vision optics like the FLIR Breach, Armasight Sidekick, Infray Outdoor MH25 or RH25, Mum-14's, ect. Note: The brass press in fitting is already installed, and you will receive TWO allen set screws. One will be 1/4" Length and one will be 3/8". The 3/8" is to be used for recessed mini rails. The 1/4" for flush mini rails.



TOP OF DOVETAIL



The dovetail adaptor (14) is designed for use with the Rix Stride ST6 or the AGM Sting IR. The slot allows for some forward and reward adjustment on the unit itself.



BOTTOM OF DOVETAIL



TOP OF DOVETAIL



INSTALLED ON ST6

3 shims (8) of varying thickness are included for independent height adjustment. If needed, remove thumb nut (9) and dovetail receiver (5 or 6) on only the higher optic and install only one shim of the proper thickness (8) that aligns the center of the objective lens of both optics.



**For questions about the product or the included warranty, please contact us via:**

Email: [cs@arkayne.com](mailto:cs@arkayne.com)

P.O. Box: PO Box 212 Womelsdorf PA 19567

<https://arkayne.com>

**PLEASE NOTE: IF YOU HAVE ANY QUESTIONS ABOUT THIS PRODUCT WHATSOEVER, PLEASE CONTACT US PRIOR TO USE. IMPROPER INSTALLATION OF COMPONENTS OR TIGHTENING OF HARDWARE COULD RESULT IN DAMAGE TO YOUR NIGHT VISION AND/OR THERMAL UNITS AND BODILY RISK/HARM TO YOURSELF. UTILIZING THE SYMBIOTE BRIDGE AND ITS COMPONENTS OUTSIDE OF THE INTENDED DESIGN PARAMETERS VOIDS WARRANTIES AND/OR GUARANTEES. UNDER NO CIRCUMSTANCE WILL ARKAYNE CO (OR ITS AFFILIATES, PARTNERS, PARENT ORGANIZATIONS OR OTHER RELATIONSHIPS) BE HELD RESPONSIBLE FOR YOUR USE OF THIS PRODUCT.**